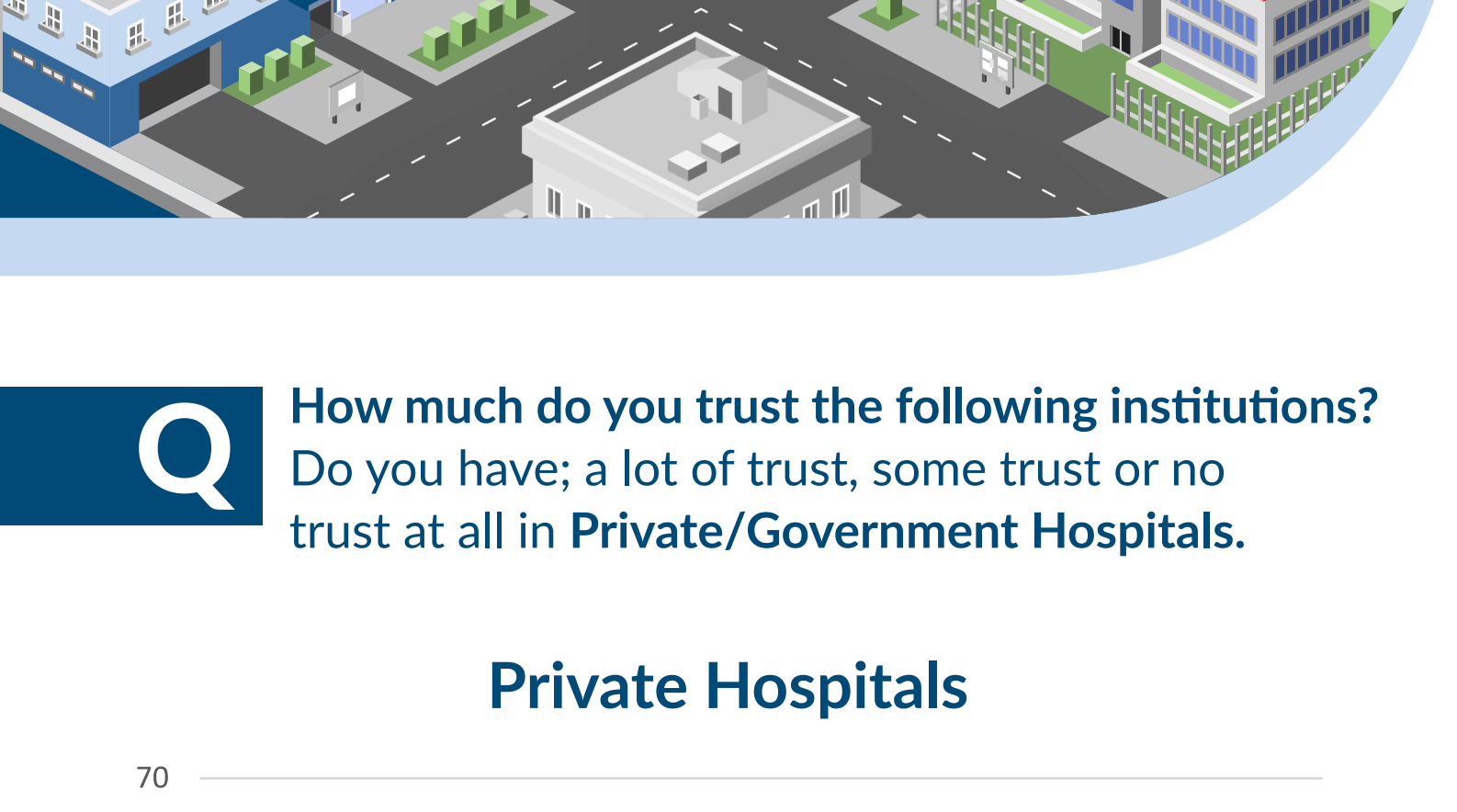


COVID-19 POLL

Indians trust in government hospitals rises

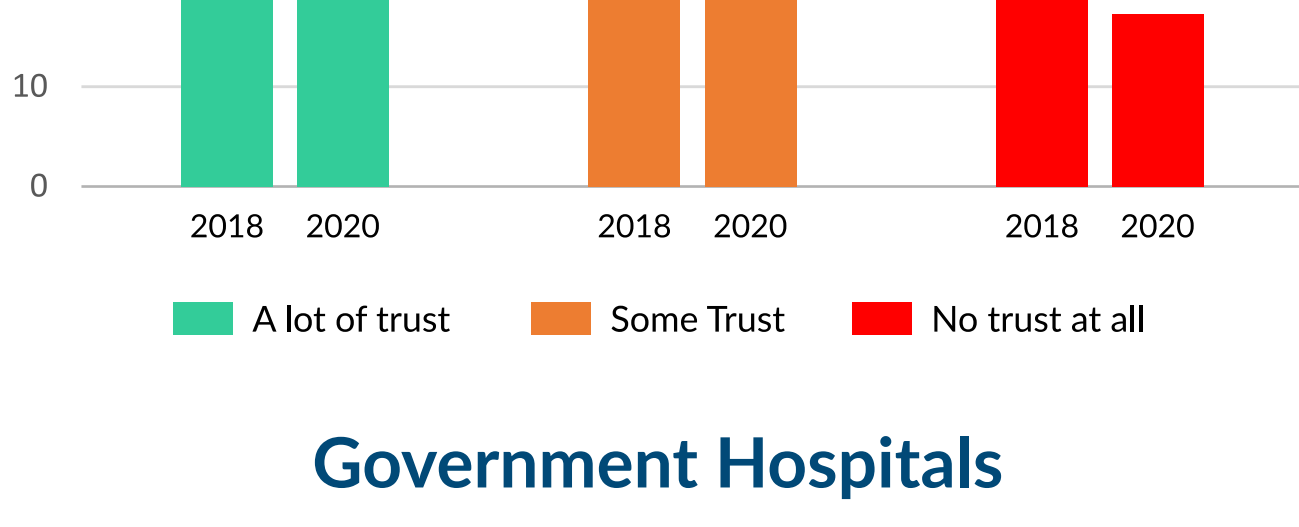
Team CVoter conducted a series of surveys to find out the level of trust Indians placed in government and private institutions, namely hospitals and schools. The most considerable change in trust was in government hospitals, with nearly 53% of Indians in 2020 stating they have “a lot of trust” in them as compared to 37.6% in 2018. Levels of trust in both private and government schools remained relatively unchanged in the past 2 years.

Team Polstrat breaks down this change in trust across demographics in India.

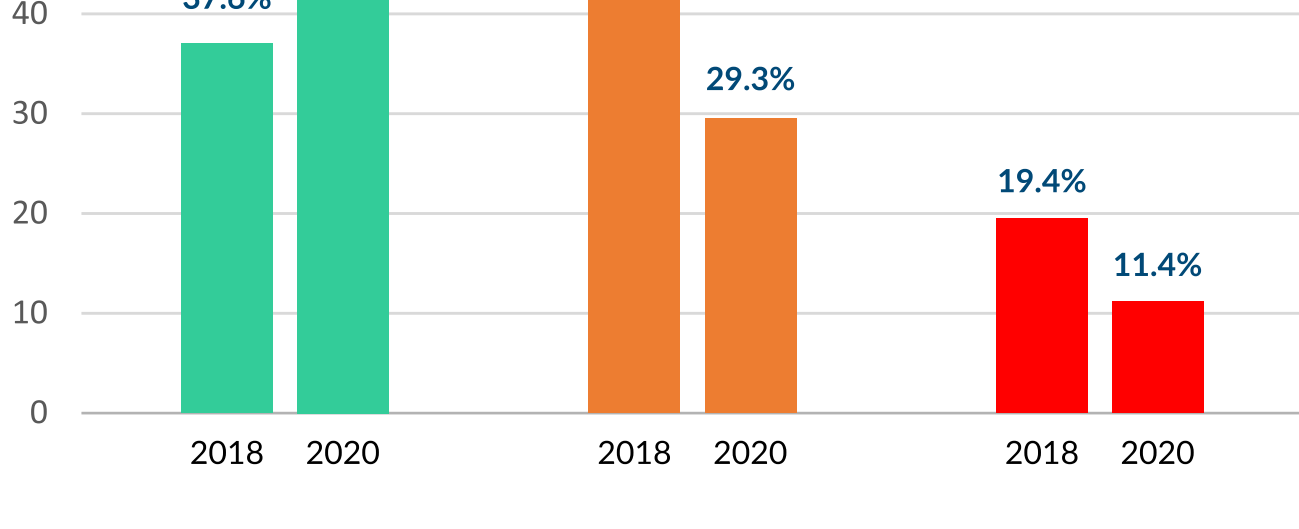


Q How much do you trust the following institutions? Do you have; a lot of trust, some trust or no trust at all in Private/Government Hospitals.

Private Hospitals

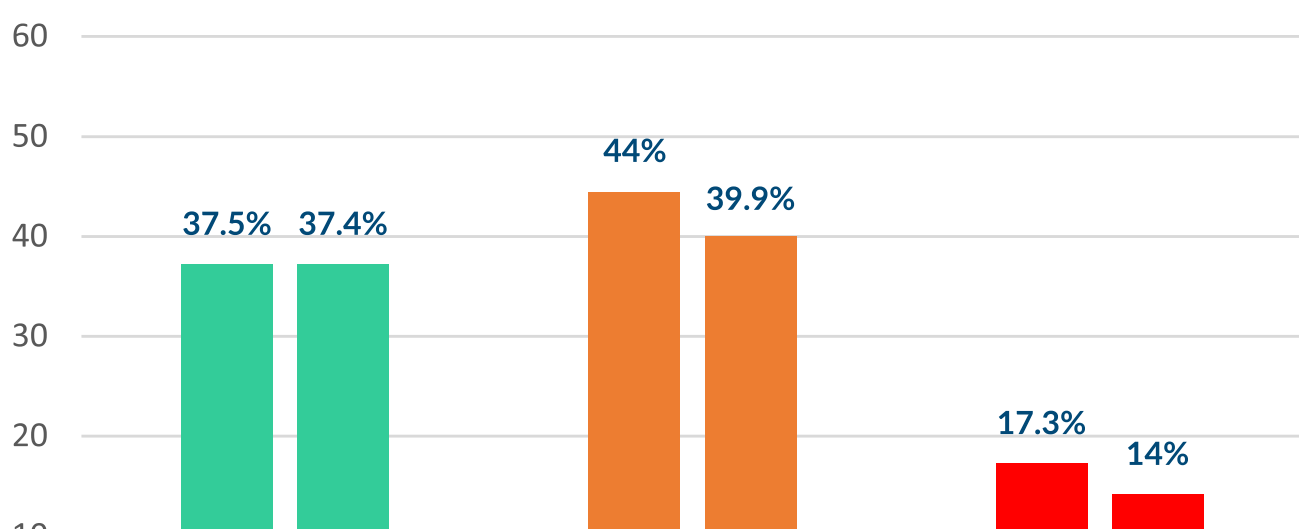


Government Hospitals

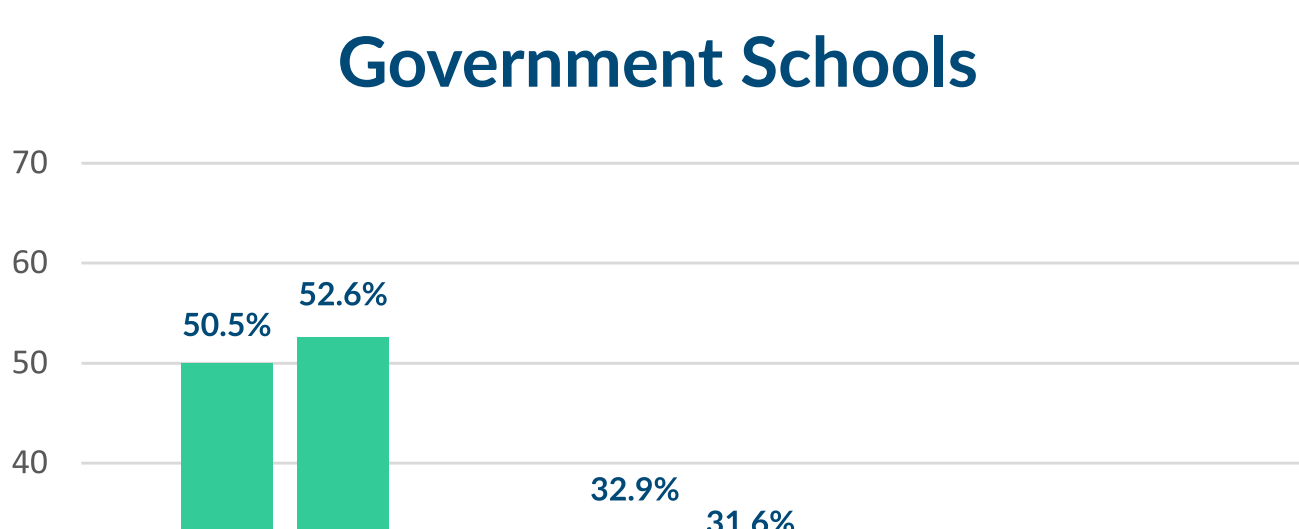


Q How much do you trust the following institutions? Do you have; a lot of trust, some trust or no trust at all in Private/Government Schools

Private Schools



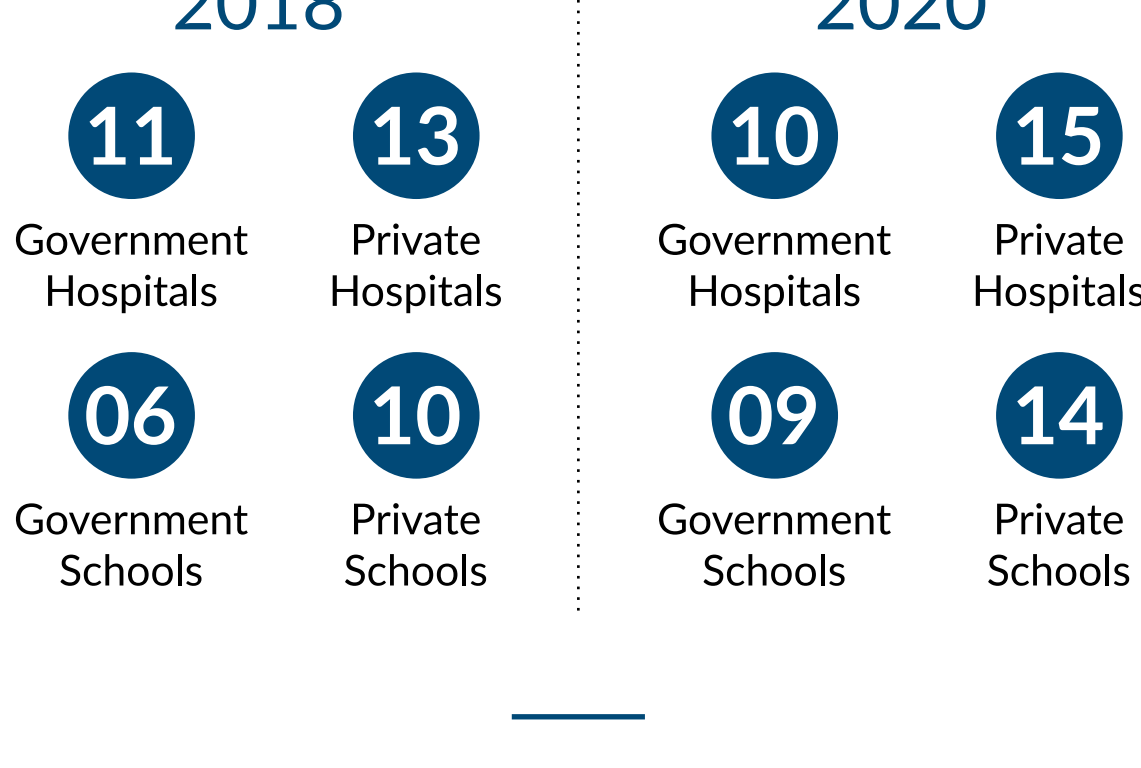
Government Schools



Main Takeaways

2020 Respondents had more trust in **government hospitals (52.8%)** than in **private hospitals (38.2%)**. Respondents also trusted **government schools (52.6%)** more than **private schools (37.4%)**.

The rank of **government and private schools and private hospitals** amongst all **18 institutions** asked about in the survey fell in 2020 as compared to 2018. However, the rank of **government hospitals** increased in 2020.



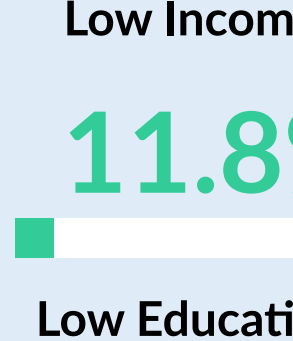
Breaking Down 2020 Data

Government vs Private Hospitals

Overall, the rise in trust in **government hospitals (15.2%)** was much higher than the rise in trust in **private hospitals (4.1%)**

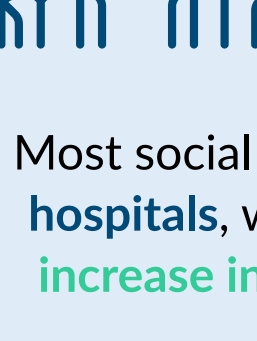
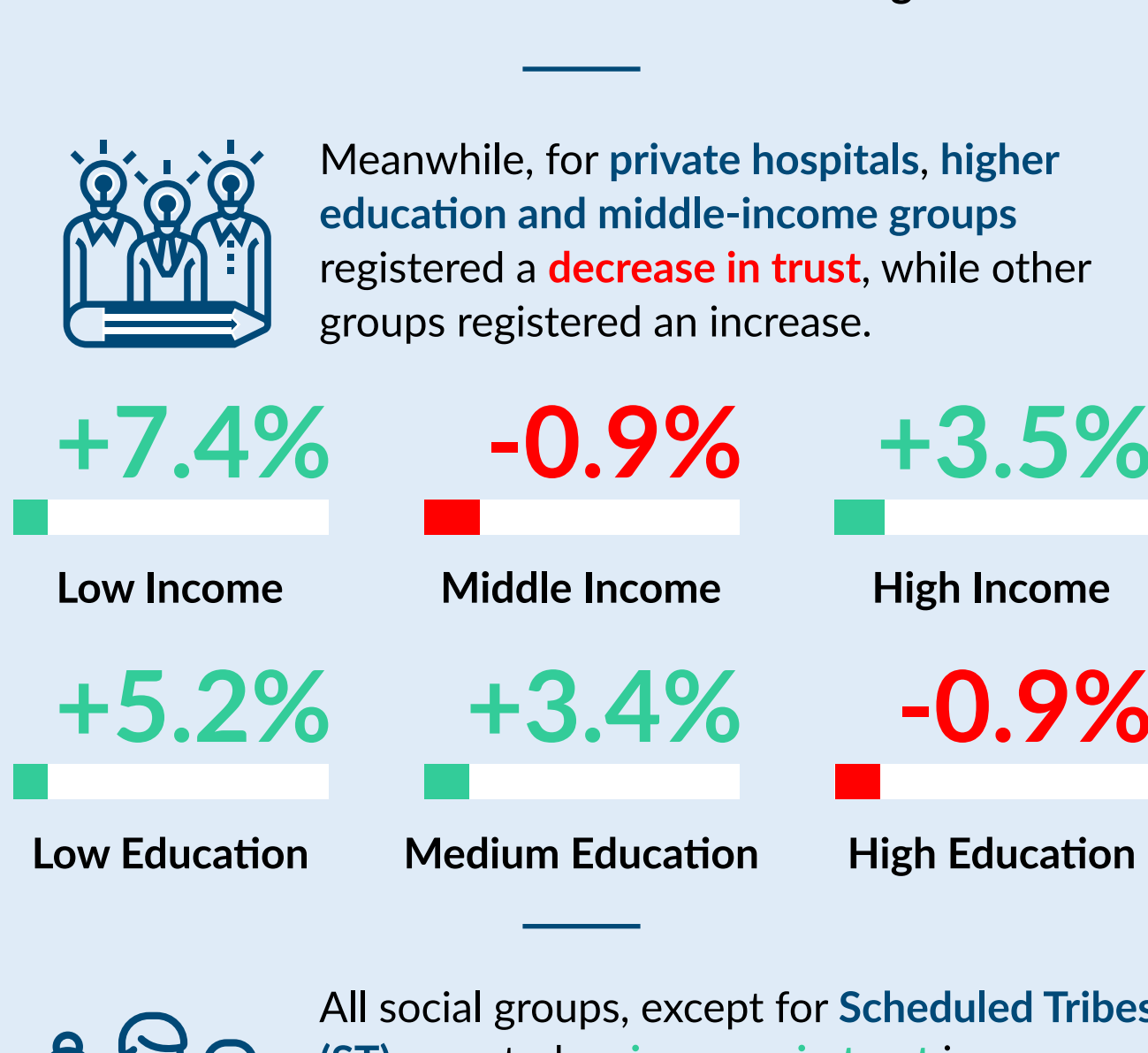


All demographics, across, **age, gender, social, income and education groups** recorded a significant **increase in trust** in **government hospitals**. Meanwhile, there was a varied response to **private hospitals** across demographics.



All education and income groups registered an **increase in trust** in **government hospitals**.

(Increase in trust by)



Meanwhile, for **private hospitals**, **higher education and middle-income groups** registered a **decrease in trust**, while other groups registered an increase.



All social groups, except for **Scheduled Tribes (ST)** reported an **increase in trust** in **government hospitals**. **Scheduled Tribes (ST)** reported a **21.6% decline in trust**.

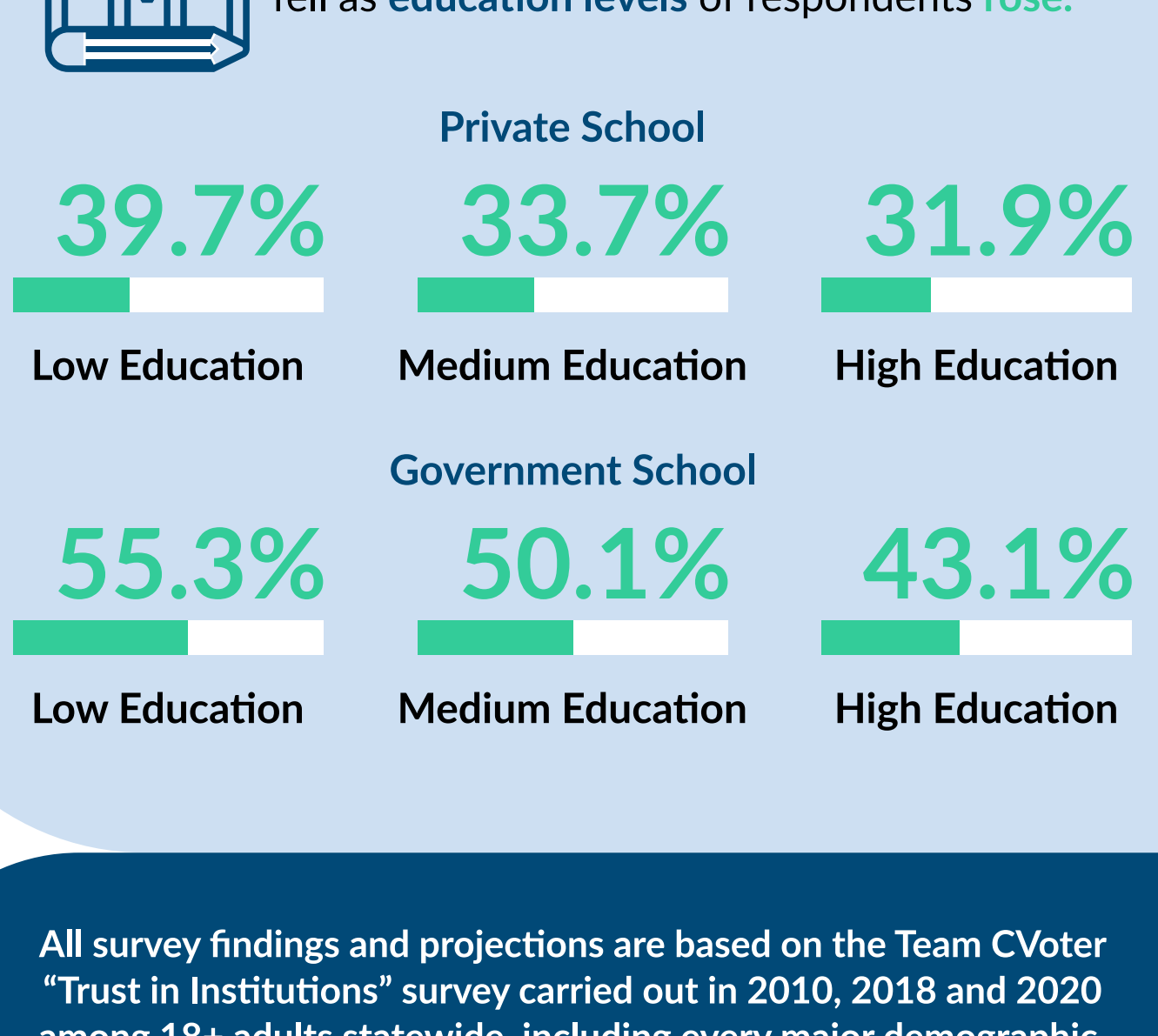
Most social groups reported an **increase in trust** in **private hospitals**, with **Scheduled Tribes (ST)** reporting an **19.1% increase in trust** and **Others** reporting an **18% increase**.

Government vs Private Schools

Overall, trust levels in both **government and private schools** remained relatively similar in 2020 as compared to 2018. **Govt schools** continued to be deemed more trustworthy by respondents with **52.6%** of respondents having a **lot of trust** in them as compared to **37.4%** for **private schools**.



Some **social groups** reported a **huge decline** in trust in both **government and private schools**, while some reported a **surge in trust**.



All survey findings and projections are based on the Team CVoter “Trust in Institutions” survey carried out in 2010, 2018 and 2020 among 18+ adults statewide, including every major demographic.

The data is weighted to the known demographic profile of every state, including age group, social group, income, region, gender and education levels.

SAMPLE SIZE: 2018: 2,709 | 2020: 1,347 | Total: 4,056



| Social Media Partner

For more information, visit
polstrat.com | teamcvoter.com